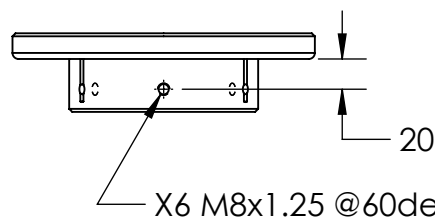
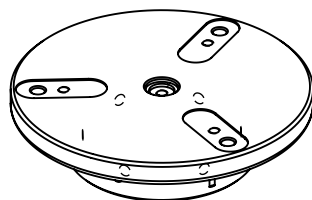
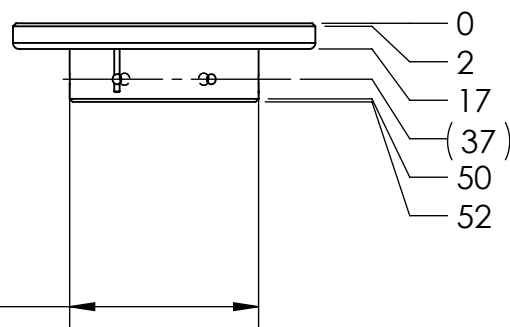


SECTION A-A



1.5mm Under
Inner Diameter of Pier



PROPRIETARY AND CONFIDENTIAL

THE INFORMATION CONTAINED IN THIS DRAWING IS THE SOLE PROPERTY OF CELESTRON, LLC. ANY REPRODUCTION IN PART OR AS A WHOLE WITHOUT THE WRITTEN PERMISSION OF CELESTRON, LLC IS PROHIBITED.

UNLESS OTHERWISE SPECIFIED:

DIMENSIONS ARE IN MILLIMETER
TOLERANCES:
FRACTIONAL ±
ANGULAR: MACH ±0.50
TWO PLACE DECIMAL ±0.20
THREE PLACE DECIMAL ±0.005

INTERPRET GEOMETRIC
TOLERANCING PER: 25.00 mm

MATERIAL
6-Series Aluminum

FINISH
Anodized type-I

DO NOT SCALE DRAWING

	NAME	DATE
DRAWN	R.G.	09.23.19
CHECKED		
ENG APPR.		
MFG APPR.		
Q.A.		

COMMENTS:

Process:
Machined

CELESTRON 2835 Columbia St.
Torrance, CA 90503

TITLE:

NexStar, SE, GPS, CPC
to 6" Pier - Adapter
Plate

SIZE	DWG. NO.	REV
A	AP100	X1
SCALE: 1:5	WEIGHT:	SHEET 1 OF 1